

# Price List 2023 (excl. VAT)

THE WAY TO THE FUTURE\_

## AIR CONDITIONERS

ECOLOGICAL CHOICE

EN



**mitsui**<sup>®</sup>



THE WAY TO THE FUTURE\_

The company was founded in 1981 with the aim of marketing and distributing air conditioning and air treatment products.

It created an extensive sales and after-sales organisation for the end customer, expanding throughout the country.

In the 2000s, Mitsui decided to develop production and expand its areas of expertise. Renewable energy systems such as photovoltaic and solar thermal have also become part of the company's references.

In this wide-ranging production, Mitsui distinguished itself with exclusive models, building plants with integrated products and systems.

[www.mitsuiairconditioner.com](http://www.mitsuiairconditioner.com)

# INDEX

<b>Introduction</b>	<b>2</b>
<hr/>	
<b>Wall mounted features</b>	
<hr/>	
Dynamic line: plasma ion generator	4
Trend line: 3-stage filter pack	5
<b>“Dynamic line” - Wall mounted</b>	<b>6</b>
<hr/>	
<b>“Trend line” - Wall mounted</b>	<b>8</b>
<hr/>	
<b>Possible matching</b>	<b>10</b>
<hr/>	
<b>Single unit price list</b>	<b>12</b>
<hr/>	
<b>Console / Floor &amp; Ceiling line</b>	<b>14</b>
<hr/>	
<b>Cassette line</b>	<b>16</b>
<hr/>	
<b>Ducted line</b>	<b>18</b>
<hr/>	
<b>Floor Standing line</b>	<b>20</b>
<hr/>	
<b>No Outdoor Unit line</b>	
<hr/>	
“Air-Air”	21
“Air-Water”	22
<b>Portable Line / Air Curtain Line</b>	<b>23</b>
<hr/>	

# WHY CHOOSE MITSUI AIR CONDITIONERS?

Mitsui proposes a new way of well-being for the domestic, residential and commercial environment. Careful analysis of the technology based on fundamental aspects such as design, ecology, operation, make the products perfectly integrated with the structural aspects of the home or building.

The qualitative result is silent operation even at maximum speed, the absence of vibrations, low energy consumption and a wide operating range even at the most extreme outside temperatures.



## LESS IMPACT ON THE ENVIRONMENT AND MORE CONSUMER SAVINGS

Air conditioning units transfer energy freely present in the air, considered as a renewable source, to surroundings or spaces with different sources of temperature. It is therefore the ideal solution to reduce energy consumption and CO2 emissions and, at the same time, safeguard the planet.

## EUROPEAN ACTION PLAN



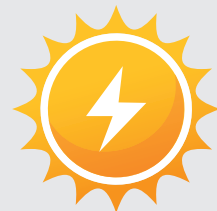
**-40%**  
of CO<sub>2</sub>  
emissions

+



**+32,5%**  
renewable  
energy

+



**32%**  
of use of renewable energy sources  
on the final gross consumption

## TECHNOLOGY IS USER-FRIENDLY



### APP NETHOME PLUS

for split monitoring



### amazon alexa

for voice-control



Nowadays the connection is always user-friendly, that's why even Mitsui comes with a special Wi-Fi kit for his range of products and an easy-to-use APP for control and operation of air conditioners in any situation, even remotely with smartphone or tablet.

It's possible to monitor the air conditioners using voice control thanks to the compatibility with Amazon Alexa.

Net Home Plus App can be free to download from Google Play and App Store and easy to install with one click.



KIT Wi-Fi for  
Dynamic line  
Trend line



KIT Wi-Fi for  
Commercial Line





# DYNAMIC LINE



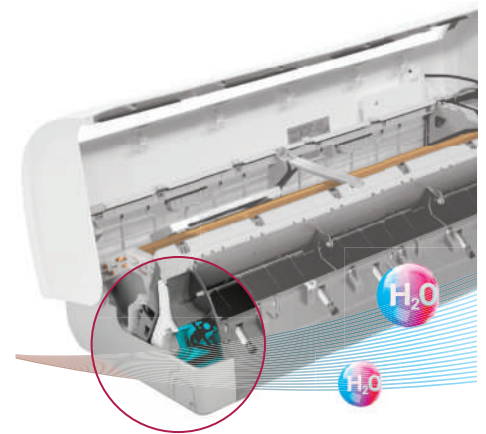
## PLASMA ION GENERATOR

The air ioniser uses powerful air purification technology that does not require a physical filter to produce clean, fresh air.

## Technology born of nature

The Dynamic line air conditioners conceal a great technology inside them, inspired by natural purification processes: the ion generator with plasma technology.

This system allows water molecules to be divided into ions with positive and negative charge. These ions diffuse into the environment, actively breaking down pollutants such as germs and bacteria in the air and adhering to the surface such as fungi, mould, viruses and odours, and then return to the air in the form of water vapour.



# TREND LINE



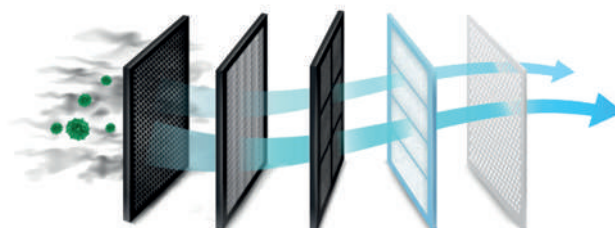
## 3-STAGE FILTER PACK

The filter system effectively removes pollutants and allergens, allowing pollutant-free air to escape.

## A triple protection for your environment

The Trend line air conditioners have a multiple stage filter pack, which offers triple protection.

The first high density dust filter, removes large, harmful particles such as pollen and dust. The second active carbon filter absorbs small harmful particles, such as mites, smoke and micro-pollutants. A third silver ion filter eliminates bacteria, fungi and other harmful substances in the air, inhibiting their further growth and proliferation.



### FILTER 1

#### High density pre filter

Collecting dust

### FILTER 2

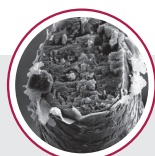
#### Active carbon filter

Acts on allergens, smoke, micro-dust (under 0.3um)

### FILTER 3

#### Silver ion filter

Eliminates bacteria, fungi and others harmful substances



Animal hair



Mites



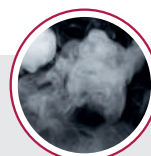
Fungi



Flower pollen



Bacteria



Smog



Smoke

# DYNAMIC LINE

## HIGH-EFFICIENCY INVERTER AIR CONDITIONERS RESIDENTIAL LINE



Full  
inverter



Wi-Fi



R32  
Refrigerant  
gas

The Dynamic wall mounted is characterised by an **exclusive design with a revolutionised internal structure and arranged to ease installation and maintenance**. This significantly reduces assembly time, possible change of electronic board, possible replacement of the fan motor and cleaning of the filter without opening the front panel, allowing the dual advantage for both the installation technician and the end user. This platform, characterised by a **3-DC Inverter System, with continuous**

**dynamic modulation of the compressor and fans**, allows greater seasonal energy savings to be obtained and better environmental comfort due to a constant ambient temperature. Furthermore, horizontal and vertical swinging of the louvers allows even air distribution. As demonstrated by the seasonal energy efficiency, the Dynamic line of air conditioners obtains the highest energy class in terms of performance.

## FEATURES

- Wi-Fi included
- Remote control included
- Follow Me - Eco Sensor
- Plasma ion generator
- High-density antibacterial filter
- Self-cleaning filters
- Anti-corrosion treatment of batteries
- Vertical and horizontal 3D airflow
- Super silent mode
- Easy installation, maintenance and cleaning
- Energy saving 1W Standby
- Frost protection



### PLASMA ION GENERATOR

The air ionizer uses powerful air purification technology that does not require a physical filter to produce clean, fresh air.



## DYNAMIC MONO SPLIT 9000 / 12000 / 18000 / 24000 BTU/h

9000 / 12000 18000 / 24000	Cooling kW	Heating kW	SEER	SCOP	Dimensions (mm) WxDxH	Price €
CDX9HP24X	2.6	2.9	8.8	4.6	INT 805x193x302 EXT 765x303x555	<b>849,00</b>
CDX12HP24X	3.5	3,8	8.5	4.6	INT 805x193x302 EXT 765x303x555	<b>898,00</b>
CDX18HP24X	5.3	5.6	7.5	4.0	INT 964x222x325 EXT 805x330x554	<b>1.346,00</b>
CDX24HP24X	7.0	7.3	6.5	4.0	INT 1106x232x342 EXT 890x342x673	<b>1.759,00</b>

### SOUND PRESSURE LEVEL (Hi/Mi/Low/Si)

CDX9HP24X	CDX12HP24X	CDX18HP24X	CDX24HP24X
36.5/29/24/20 dB(A)	39/33/25/21 dB(A)	43.5/39/32/22 dB(A)	46/42/33/27 dB(A)

## DYNAMIC MULTI SPLIT Dual / Trial / Quadri / Penta

	Cooling kW	Heating kW	SEER	SCOP	Price €
CDXD9HP24X Dual 9000 BTU/h	4.1	4.4	6.5	4.0	<b>1.479,00</b>
CDXD12HP24X Dual 12000 BTU/h	5.3	5.6	6.3	4.0	<b>1.649,00</b>
CDXT30HP24X Trial 2x9000 + 12000 BTU/h	7.9	8.2	6.3	4.0	<b>2.414,00</b>
CDXQ39HP24 Quadri 3x9000 + 12000 BTU/h	10.5	10.7	6.7	4.0	<b>3.590,00</b>
CDXP45HP24 Penta 4x9000 + 12000 BTU/h	12.3	12.3	7.0	3.6	<b>4.962,00</b>

USB Wi-Fi

**included**

PRICES EXCLUDING VAT



NetHome Plus



Wi-Fi function for easy management from smartphones via **NetHome Plus** app and vocally with **Amazon Alexa**



amazon alexa



# TREND LINE

## INVERTER AIR CONDITIONERS RESIDENTIAL LINE



Inverter



Wi-Fi  
optional



Refrigerant  
gas



The Trend wall mounted air conditioners are distinguished by an **exclusive design of the internal unit with harmonious and rounded lines**. They have a new axial fan and new air flues to increase and improve the air flow, reducing turbulence and improving silence. The 9000 and 12000 Btu/h (kW)

powers have very small external unit dimensions. The surface of the extraction vent was however increased, allowing an increase in air volume and less noise. A product **designed to optimise balanced efficiency, comfort and dimensions**.

## FEATURES

- Wi-Fi optional
- Remote control included
- High-density antibacterial filter
- Triple silver ion filter
- Anti-corrosion treatment of batteries
- Super silent mode
- Easy installation, maintenance and cleaning
- Energy saving 1W Standby
- Frost protection



### 3-STAGE FILTER PACK

The filter system effectively removes pollutants and allergens, allowing pollutant-free air to escape.

## TREND MONO SPLIT 9000 / 12000 / 18000 / 24000 BTU/h

	Cooling kW	Heating kW	SEER	SCOP	Dimensions (mm) WxDxH	Price €
MTX9HP24	2.6	2.9	6.3	4.0	INT 805x193x302 EST 765x303x555	<b>607,00</b>
MTX12HP24	3.5	3.9	6.1	4.0	INT 805x193x302 EST 765x303x555	<b>644,00</b>
MTX18HP24X	5.3	5.6	7.4	4.0	INT 964x222x325 EST 805x330x554	<b>1.092,00</b>
MTX24HP24X	7.0	7.3	6.1	4.0	INT 1106x232x342 EST 890x342x673	<b>1.600,00</b>

### SOUND PRESSURE LEVEL (Hi/Mi/Low/Si)

MTX9HP24	MTX12HP24	MTX18HP24X	MTX24HP24X
38.5/32/25/21 dB(A)	40.5/34.5/25/21 dB(A)	42.5/36/26/20 dB(A)	45/40.5/36/31 dB(A)

## TREND MULTI SPLIT Dual / Trial / Quadri / Penta

	Cooling kW	Heating kW	SEER	SCOP	Price €
MTXD9HP24X Dual 9000 BTU/h	4.1	4.4	5.6	3.8	<b>1.262,00</b>
MTXD12HP24X Dual 12000 BTU/h	5.3	5.6	6.1	3.8	<b>1.432,00</b>
MTXT30HP24X Trial 2x9000 + 12000 BTU/h	7.9	8.2	6.1	4.0	<b>2.085,00</b>
MTXQ39HP24 Quadri 3x9000 + 12000 BTU/h	10.5	10.8	6.2	3.8	<b>3.154,00</b>
MTXP45HP24 Penta 4x9000 + 12000 BTU/h	12.3	12.3	6.1	3.5	<b>4.416,00</b>

USB Wi-Fi

(per single indoor unit)

**56,00**

PRICES EXCLUDING VAT



NetHome Plus



Wi-Fi function for easy management  
from smartphones via **NetHome Plus** app  
and vocally with **Amazon Alexa**



amazon alexa

# POSSIBLE MATCHING

## BETWEEN THE MULTISPLIT OUTDOOR UNIT AND THE INDOOR UNITS

THE INDOOR UNITS CAN BE SELECTED FROM VARIOUS TYPES:  
WALL, CONSOLE, FLOOR/CEILING, CASSETTE AND DUCTED.

MULTISPLIT OUTDOOR UNIT - **MTXD018HP24X**  
DUAL (TWO CONNECTIONS) 18000 BTU/h



### INDOOR UNIT

1 unit	2 units
9	9+9
12	9+12

MULTISPLIT OUTDOOR UNIT - **MTXD024HP24X**  
DUAL (TWO CONNECTIONS) 24000 BTU/h



### INDOOR UNIT

1 unit	2 units
9	9+9
12	9+12
18	12+12

MULTISPLIT OUTDOOR UNIT - **MTXT030HP24X**  
TRIAL (THREE CONNECTIONS) 30000 BTU/h



### INDOOR UNIT

2 units	3 units
9+9	9+9+9
9+12	9+9+12
9+18	9+12+12
12+12	12+12+12
12+18	

**MULTISPLIT OUTDOOR UNIT - MTXQ039HP24**  
**QUADRI (FOUR CONNECTIONS) 39000 BTU/h**



**INDOOR UNIT**

2 units	3 units	4 units
9+9	9+9+9	9+9+9+9
9+12	9+9+12	9+9+9+12
9+18	9+9+18	9+9+9+18
12+12	9+12+12	9+9+12+12
12+18	9+12+18	9+9+12+18
18+18	9+18+18	9+12+12+12
12+24*	12+12+12	12+12+12+12
	12+12+18	

**MULTISPLIT OUTDOOR UNIT - MTXP045HP24**  
**PENTA (FIVE CONNECTIONS) 45000 BTU/h**



**INDOOR UNIT**

2 units	3 units	4 units	5 units
9+9	9+9+9	9+9+9+9	9+9+9+9+9
9+12	9+9+12	9+9+9+12	9+9+9+9+12
9+18	9+9+18	9+9+9+18	9+9+9+9+18
9+24*	9+9+24*	9+9+9+24*	9+9+9+12+12
12+12	9+12+12	9+9+12+12	9+9+9+12+18
12+18	9+12+18	9+9+12+18	9+9+12+12+12
12+24*	9+12+24*	9+9+12+24*	
18+18	9+18+18	9+9+18+18	
18+24*	12+12+12	9+12+12+12	
	12+12+18	9+12+12+18	
	12+12+24*	9+12+12+24*	
	12+18+18	9+12+18+18	
		12+12+12+12	
		12+12+12+18	

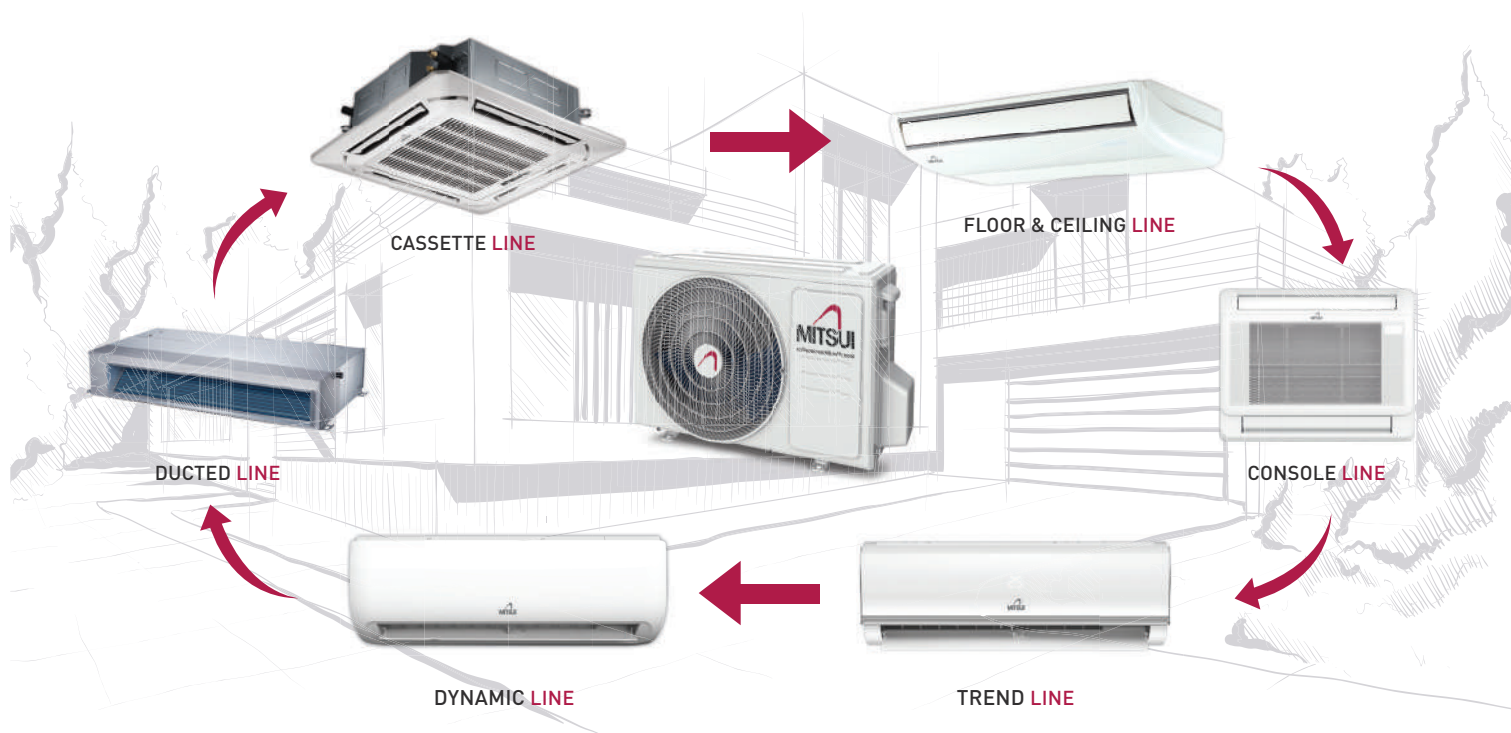
\* Only Dynamic / Trend indoor

Console mod.17: see reference table mod. 18



# SINGLE UNIT PRICE LIST

## MULTISPLIT OUTDOOR UNIT AND INDOOR UNITS



### OUTDOOR UNIT - MULTISPLIT



	Power supply V/Ph/Hz	Sound power level db(A)	Dimension (mm) LxHxP	Price €
<b>DUAL</b> MTXD018HP24X	220-240/1/50	65.0	805x330x554	<b>898,00</b>
<b>DUAL</b> MTXD024HP24X	220-240/1/50	65.0	805x330x554	<b>1.019,00</b>
<b>TRIAL</b> MTXT030HP24X	220-240/1/50	68.0	890x342x673	<b>1.516,00</b>
<b>QUADRI</b> MTXQ039HP24	220-240/1/50	67.0	946x410x810	<b>2.403,00</b>
<b>PENTA</b> MTXP045HP24	220-240/1/50	67.0	946x410x810	<b>3.480,00</b>

### INDOOR UNIT - DYNAMIC



	Power supply V/Ph/Hz	Sound power level db(A)	Dimension (mm) LxPxH	Price €
CDXI9HP24X	220-240/1/50	53.0	805x193x302	<b>292,00</b>
CDXI12HP24X	220-240/1/50	53.0	805x193x302	<b>315,00</b>
CDXI18HP24X	220-240/1/50	56.5	964x222x325	<b>474,00</b>
CDXI24HP24X	220-240/1/50	62.0	1106x232x342	<b>618,00</b>

### INDOOR UNIT - TREND



	Power supply V/Ph/Hz	Sound power level db(A)	Dimension (mm) LxPxH	Price €
MTXI9HP24	220-240/1/50	54.0	805x194x285	<b>182,00</b>
MTXI12HP24	220-240/1/50	55.0	805x194x285	<b>205,00</b>
MTXI18HP24X	220-240/1/50	56.0	957x213x302	<b>383,00</b>
MTXI24HP24X	220-240/1/50	59.0	1040x220x327	<b>560,00</b>

### INDOOR UNIT - CONSOLE



	Power supply V/Ph/Hz	Sound power level db(A)	Dimension (mm) LxPxH	Price €
MFXI12HP24X	220-240/1/50	54.0	794x206x621	<b>574,00</b>
MFXI17HP24X	220-240/1/50	55.0	794x206x621	<b>655,00</b>

### INDOOR UNIT - FLOOR & CEILING



	Power supply V/Ph/Hz	Sound power level db(A)	Dimension (mm) LxPxH	Price €
MFXI18HP24X	220-240/1/50	57.0	1068x235x675	<b>770,00</b>

### INDOOR UNIT - CASSETTE



	Power supply V/Ph/Hz	Sound power level db(A)	Dimension (mm) LxPxH	Price €
MXXI12HP24X	220-240/1/50	56.0	570x570x260	<b>697,00</b>
MXXI18HP24X	220-240/1/50	57.0	570x570x260	<b>767,00</b>

### INDOOR UNIT - DUCTED



	Power supply V/Ph/Hz	Sound power level db(A)	Dimension (mm) LxPxH	Price €
MNXI12HP24X	220-240/1/50	57.0	700x506x200	<b>879,00</b>
MNXI18HP24X	220-240/1/50	58.0	880x674x210	<b>900,00</b>

# CONSOLE / FLOOR & CEILING LINE

INVERTER AIR CONDITIONERS  
COMMERCIAL LINE



Inverter



Wi-Fi  
optional



Refrigerant  
gas

The Floor/Ceiling line is composed of **eight models** with seven different capacities, and the entire range is equipped with inverter technology and a heat pump. The internal units, with re-modernised design, adapt to any solution and environment, whether residential or commercial. The extreme compactness also facilitates its installation in tight spaces, with the **possibility of being installed vertically on the floor, or horizontally on the ceiling**. The ample automated front flaps allow air flow to be directed as required. The entry level model (12000 and 17000Btu/h) belong to the floor ceiling category, but is best recognised as the **Console unit**. It can only be installed on the floor. This equipment allows air conditioning of environments using a **double ventilation slot, one on the upper part of the unit and the second one on the lower part**. This flow



diversification therefore makes the product versatile and suitable to maintain a comfortable environment where installed. Furthermore, the intake air is picked from the surrounding environment at 360°C thanks to the specific slots placed on the front and side of the casing. This increases air circulation in the room, thereby guaranteeing greater thermal comfort.

## FEATURES

- Wi-Fi optional
- Floor and ceiling installation
- Remote control included
- Double ventilation slot
- Wide operating range
- High quietness



### CONSOLE 12000 / 17000 BTU/h

	Cooling kW	Heating kW	SEER	SCOP	Dimensions (mm) WxDxH	Price €
MFX12HP24X	3.5	3.8	7.3	4.0	INT 794x206x621 EXT 765x303x555	<b>1.437,00</b>
MFX17HP24X	5.0	5.3	6.7	4.0	INT 794x206x621 EXT 805x330x554	<b>1.792,00</b>



### FLOOR & CEILING 18000 / 24000 / 36000 BTU/h

### TRIPHASE FLOOR & CEILING 36000 / 48000 / 60000 BTU/h

	Cooling kW	Heating kW	SEER	SCOP	Dimensions (mm) WxDxH	Price €
MFX18HP24X	5.3	5.6	6.2	4.0	INT 1068x235x675 EXT 805x330x554	<b>2.029,00</b>
MFX24HP24X	7.0	7.6	6.1	4.0	INT 1068x235x675 EXT 890x342x673	<b>2.314,00</b>
MFX36HP24X	10.5	11.7	6.2	4.0	INT 1650x235x675 EXT 946x410x810	<b>3.452,00</b>
MFX36HP24P3X	10.5	11.7	6.4	4.1	INT 1650x235x675 EXT 946x410x810	<b>3.616,00</b>
MFX48HP24P3X	14.0	16.1	6.1	4.0	INT 1650x235x675 EXT 952x415x1333	<b>4.479,00</b>
MFX60HP24P3X	15.8	18.2	6.1	4.0	INT 1650x235x675 EXT 952x415x1333	<b>5.015,00</b>

USB Wi-Fi	<b>161,00</b>
-----------	---------------

PRICES EXCLUDING VAT



NetHome Plus



Wi-Fi function for easy management from smartphones via **NetHome Plus** app and vocally with **Amazon Alexa**



amazon alexa

# CASSETTE LINE

## INVERTER AIR CONDITIONERS COMMERCIAL LINE



Inverter



Wi-Fi  
optional



Refrigerant  
gas

This product line is intended for fitted or false ceiling installation. It is ideal for environments for residential, commercial and tertiary use.

The internal unit allows picking air from the environment where it is installed, filters it and conditions it according to final needs and puts it back in the environment using four specific automated ventilation louvers, placed on the outer sides of the unit. You will therefore have varied, uniform air flow distribution, guaranteeing the desired comfort. Furthermore, the terminals powered from mod. 24 to mod. 60 are also equipped with a **specific air input for ducted renewal of air, coming from outside**. This means fresh, new air always enters the environment. These cassette terminals are equipped as standard with a **condensate liquid lifting pump**, which allows lifting and drainage of



the latter at a height of 750mm compared to the false ceiling or 530mm from positioning of the condensate drain. The entire range of Mitsui cassette units is composed of **seven models** and offers a diversified design according to the power required:

- Compact panelling for models with power 12 and 18;
- Slim panelling for models with power 24-36-48 and 60 power.

## FEATURES

- Wi-Fi optional
- Remote control included
- Condensate drain pump
- Fresh air intake
- Wide operating range
- High quietness
- Modern design
- Easy installation, maintenance and cleaning





### CASSETTE 12000 / 18000 BTU/h

	Cooling kW	Heating kW	SEER	SCOP	Dimensions (mm) WxDxH	Price €
MXX12HP24X	3.5	3.8	6.6	4.1	INT 570x570x260 EXT 765x303x555	<b>1.610,00</b>
MXX18HP24X	5.3	5.6	6.3	4.0	INT 570x570x260 EXT 805x330x554	<b>1.959,00</b>



### CASSETTE 24000 / 36000 BTU/h

### TRIPHASE CASSETTE 36000 / 48000 / 60000 BTU/h

	Cooling kW	Heating kW	SEER	SCOP	Dimensions (mm) WxDxH	Price €
MXX24HP24X	7.0	7.6	6.2	4.0	INT 830x830x205 EXT 890x342x673	<b>2.253,00</b>
MXX36HP24X	10.5	11.1	6.7	4.0	INT 830x830x245 EXT 946x410x810	<b>3.242,00</b>
MXX36HP24P3X	10.5	11.1	6.7	4.0	INT 830x830x245 EXT 946x410x810	<b>3.312,00</b>
MXX48HP24P3X	14.0	16.1	6.1	4.0	INT 830x830x287 EXT 952x415x1333	<b>4.455,00</b>
MXX60HP24P3X	15.2	18.2	6.3	4.0	INT 830x830x287 EXT 952x415x1333	<b>5.249,00</b>

USB Wi-Fi	<b>161,00</b>
-----------	---------------

PRICES EXCLUDING VAT



NetHome Plus



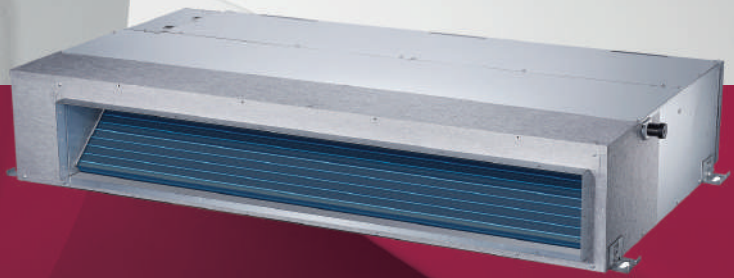
Wi-Fi function for easy management from smartphones via **NetHome Plus** app and vocally with **Amazon Alexa**



amazon alexa

# DUCTED LINE

## INVERTER AIR CONDITIONERS COMMERCIAL LINE



Inverter



Wi-Fi  
optional



R32  
Refrigerant  
gas



The ducted line is composed of **seven different models** with heat pump, all equipped with inverter technology. These machines are intended for a type of fitted or false ceiling installation. **The fans** with improved structure and power provide **elevated head up to 160Pa** for models with 24-36-48 and 60 power. This head is settable using a specific wire remote control. All the ducted units are equipped as standard with a **condensate liquid lifting pump**, which allows lifting and drainage of the latter at a height of 550mm compared to the false ceiling.

Furthermore, these terminals are equipped with a **specific air intake for ducted renewed air coming from outside**, to always have fresh and renewed air in the environment.

Adequate insulation also provides a dual advantage:

- 1) acoustic insulation
- 2) thermal insulation.

## FEATURES

- Wi-Fi optional
- Remote control included
- Condensate drain pump
- Wide operating range
- High quietness
- High prevalence
- Easy installation, maintenance and cleaning

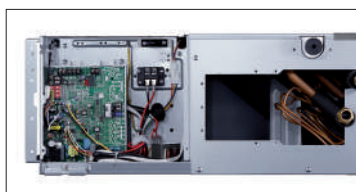


DUCTED 12000 / 18000 / 24000 / 36000 BTU/h

TRIPHASE DUCTED 36000 / 48000 / 60000 BTU/h

A++	Cooling kW	Heating kW	SEER	SCOP	Dimensions (mm) WxDxH	Price €
MNX12HP24X	3.5	3.8	6.3	4.0	INT 700x506x200 EXT 765x303x555	1.710,00
MNX18HP24X	5.3	5.6	6.5	4.0	INT 880x674x210 EXT 805x330x554	2.095,00
MNX24HP24X	7.0	7.6	6.2	4.0	INT 1100x774x249 EXT 890x342x673	2.559,00
MNX36HP24X	10.5	11.7	6.2	4.0	INT 1360x774x249 EXT 946x410x810	3.592,00
MNX36HP24P3X	10.5	11.7	6.1	4.0	INT 1360x774x249 EXT 946x410x810	3.700,00
MNX48HP24P3X	14.0	16.1	6.1	4.0	INT 1200x874x300 EXT 952x415x1333	4.759,00
MNX60HP24P3X	15.2	18.1	6.1	4.0	INT 1200x874x300 EXT 952x415x1333	5.109,00
USB Wi-Fi						161,00

PRICES EXCLUDING VAT



NetHome Plus



Wi-Fi function for easy management from smartphones via **NetHome Plus** app and vocally with **Amazon Alexa**



amazon alexa

# FLOOR STANDING LINE

INVERTER AIR CONDITIONERS  
COMMERCIAL LINE



Inverter



Wi-Fi optional




Refrigerant gas

The column line has a **single model 55000Btu/h (16 kW)** with R32 refrigerant. Placed on the ground, it allows air to be directed through its upper flaps. The air intake vent is instead positioned to the front, at the bottom, to always guarantee adequate recirculation of the air. These terminals are widely used in the commercial and tertiary sector.

- Wi-Fi optional
- Remote control included
- Wide operating range
- High quietness
- Wide air distribution angle
- Easy installation, maintenance and cleaning



	Cooling kW	Heating kW	SEER	SCOP	Dimensions (mm) WxDxH	Price €
MUX55HP24X	14.1	16.1	6.1	4.0	INT 629x456x1935 EXT 952x415x1333	<b>6.042,00</b>

USB Wi-Fi

**161,00**

PRICES EXCLUDING VAT



NetHome Plus



Wi-Fi function for easy management from smartphones via **NetHome Plus** app and vocally with **Amazon Alexa**



amazon alexa

# NO OUTDOOR UNIT LINE

AIR-AIR



Refrigerant gas



Only indoor unit



The Mitsui air conditioner without external unit, was created to satisfy a whole series of system and installation needs, which would not be possible with traditional Split systems. It finds particular use in historical centres, condominiums, hotels, prefabricated structures and structures subject to fine arts restrictions. **This unit can be installed either flush with the floor or wall.** It is obligatorily

positioned along a perimeter wall where a core drilling machine is sufficient to make the two holes for the external air intake and expulsion connections. The model is loaded with **R32 refrigerant**, with a power rating of 12000Btu/h.

## FEATURES

- Remote control included
- Single indoor unit
- Hermetic refrigerant circuit
- Drilling for air inlet and exhaust
- High quietness
- Compact dimensions
- Easy installation, maintenance and cleaning

A	Cooling kW	Heating kW	EER	SCOP	Dimensions (mm) WxDxH	Price €
NODS12HP	3.3	3.7	2.6	3.1	1000x245x580	<b>2.547,00</b>

PRICES EXCLUDING VAT



# NO OUTDOOR UNIT LINE

AIR-WATER



Refrigerant  
gas



Only indoor  
unit

The condensing unit of the water-to-air air conditioner without an outdoor unit offers versatility of installation in any small space: inside a cabinet or under the sink in the bathroom. It also guarantees excellent performance in terms of quietness and energy efficiency.

## FEATURES

- Remote control included
- Single indoor unit
- No outdoor unit
- Connection to water system
- High quietness
- Compact dimensions
- Easy installation, maintenance and cleaning

<b>A</b>	Cooling kW	Heating kW	EER	COP	Dimensions (mm) WxDxH	Price €
SUE13HL	3.6	4.1	3.6	4.1	900x180x290	<b>2.478,00</b>
SUE24HL	6.5	6.9	3.6	3.7	1020x228x310	<b>2.865,00</b>

PRICES EXCLUDING VAT

# PORTABLE LINE

## WHEELED AIR CONDITIONERS



**R290**

Refrigerant gas

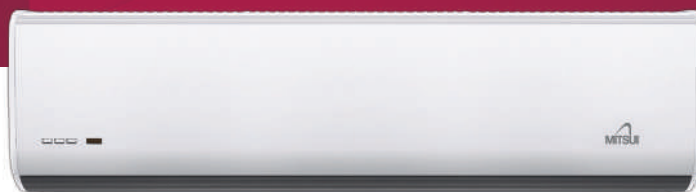
○ Remote control included

	Cooling kW	Heating kW	EER	COP	Dimensions (mm) WxDxH	Price €
MPD7CQ24	2.0	-	2.7	-	355x345x703	<b>462,00</b>
MPD9CQ24	2.6	-	2.6	-	355x345x703	<b>534,00</b>
MPD10CQ24	2.9	-	3.1	-	467x397x765	<b>690,00</b>
MPD12CQ24	3.5	-	2.6	-	467x397x765	<b>765,00</b>
MPD12HQ24	3.5	2.9	2.6	2.8	467x397x765	<b>826,00</b>

PRICES EXCLUDING VAT

# AIR CURTAIN LINE

## COMMERCIAL LINE



○ Remote control included

	Power supply V/Ph/Hz	Air flow m <sup>3</sup> /h	Air speed m/s	Fan	Dimensions (mm) WxDxH	Price €
MC90CFT	230/1/50	950	14.5	centrifugal	355x345x703	<b>413,00</b>
MC120CFT	230/1/50	1350	14.5	centrifugal	355x345x703	<b>485,00</b>
MC150CFT	230/1/50	1700	14.5	centrifugal	467x397x765	<b>667,00</b>
MC180CFT	230/1/50	2050	14.5	centrifugal	467x397x765	<b>812,00</b>
MC200CFT	230/1/50	2250	14.5	centrifugal	467x397x765	<b>861,00</b>

PRICES EXCLUDING VAT





The company reserves the right to make any changes necessary to improve features, data and images of products and accessories at any time without prior notice. For graphical reasons, the colours of the products depicted may differ from reality.



AMG S.p.A.

Via Delle Arti e dei Mestieri, 1/3  
36030 S. Vito di Leguzzano (VI) Italia

Tel. +39 0445 519933

Fax +39 0445 519037

P.I. e C.F. 02488430246

[www.amg-spa.com](http://www.amg-spa.com)

[info@amg-spa.com](mailto:info@amg-spa.com)

[www.mitsuiairconditioner.com](http://www.mitsuiairconditioner.com)